

Valemount Village

1	General
<p>Incorporated in 1962, Valemount has a total land area of 4.96 square km (2006 Census). By highway the Village is 80 km southeast of McBride and 322 km north of Kamloops. Valemount is in the Fraser-Fort George Regional District.</p>	

2					Population Estimates					Age Distribution				
Annual Estimates										2011 Census			% Distribution, 2011 *	
Year	Valemount	% Change Prev. Year	BC	% Change Prev. Year	Valemount	Male	Female	Valemount	BC					
2007	1,007	n/a	4,309,632	n/a	All ages	495	525	100.0	100.0					
2008	1,015	0.8	4,384,047	1.7	0 - 14	80	80	16.2	15.4					
2009	1,045	3.0	4,459,947	1.7	15 - 24	50	50	10.3	12.6					
2010	1,062	1.6	4,529,647	1.6	25 - 44	115	140	24.5	26.3					
2011	1,070	0.8	4,573,321	1.0	45 - 64	175	170	33.3	30.0					
					65 +	65	85	15.7	15.7					

Source: Statistics Canada (as of July 1, includes estimate of Census undercount)

* based on published totals, both sexes

2006 Census Profiles can be found on our Website at <http://www.bcstats.gov.bc.ca/census.asp>

3							Selected Census Characteristics						
							Valemount			British Columbia			
Characteristics							2001	2006	% Change	% Change	2001	2006	
Population							1,195	1,018	- 14.8	5.3	3,907,738	4,113,487	
Population (by citizenship)							1,185	1,015	- 14.3	5.3	3,868,875	4,074,385	
Non-immigrant							1,095	970	- 11.4	2.9	2,821,870	2,904,240	
Immigrant							85	40	- 52.9	10.8	1,009,820	1,119,215	
Labour force (15+ yrs.)							685	640	- 6.6	8.1	2,059,950	2,226,380	
Employees							520	540	3.8	9.2	1,715,600	1,873,050	
Self-employed							135	85	- 37.0	7.4	291,455	313,000	
Participation rate [ppt.=percentage points]							74.2%	76.6%	2.4 ppt.	0.4 ppt.	65.2%	65.6%	
Unemployment rate							13.8%	8.6%	-5.2 ppt.	-2.5 ppt.	8.5%	6.0%	
Total population 25 to 64 years							680	570	- 16.2	6.5	2,144,050	2,284,465	
No certificate, diploma or degree							295	105	- 64.4	- 40.1	471,470	282,200	
High school certificate or equivalent							175	200	14.3	27.7	462,925	591,275	
Apprenticeship/trades certificate or diploma							120	120	-	- 7.4	295,180	273,450	
College, CEGEP or other cert. or diploma							65	70	7.7	11.3	401,760	447,005	
University certificate, diploma or degree							25	80	220.0	34.7	512,715	690,535	
Bachelor's degree							10	45	350.0	23.0	282,800	347,715	
Census families							340	300	- 11.8	6.9	1,086,030	1,161,420	
Lone-parent families							50	30	- 40.0	4.0	168,420	175,165	
Households							480	455	- 5.2	7.1	1,534,335	1,643,150	
1-family households							340	300	- 11.8	6.1	1,012,925	1,074,850	
Multi-family households							-	-	-	18.4	35,050	41,510	
Non-family households							140	155	10.7	8.3	486,355	526,785	
Median Income (2000 & 2005)							\$ 16,033	\$ 23,269	45.1	12.5	\$ 22,095	\$ 24,867	
Males							\$ 19,748	\$ 32,889	66.5	9.0	\$ 28,976	\$ 31,598	
Females							\$ 12,044	\$ 14,071	16.8	14.0	\$ 17,546	\$ 19,997	
Median Family Income (2000 & 2005)							\$ 43,969	\$ 55,196	25.5	20.0	\$ 54,840	\$ 65,787	
Economic Families							340	300	- 11.8	6.5	1,044,850	1,112,810	
2001 Incidence, low income 2006 Prevalence, low income							15.1%	6.7%	-8.4 ppt.	-0.6 ppt.	13.9%	13.3%	
Unattached persons, 15+							165	160	- 3.0	4.7	576,825	603,880	
Incidence, low income							41.1%	22.6%	-18.5 ppt.	-1.4 ppt.	38.1%	36.7%	
Population in private hh.							1,180	1,005	- 14.8	5.1	3,785,270	3,978,215	
Incidence, low income							18.8%	10.4%	-8.4 ppt.	-0.5 ppt.	17.8%	17.3%	
Dwellings							480	455	- 5.2	7.1	1,534,335	1,643,150	
Owned							400	335	- 16.3	12.5	1,017,485	1,145,045	
Rented							80	120	50.0	- 3.6	512,360	493,995	
Average gross rent							\$ 451	\$ 539	19.5	10.4	\$ 750	\$ 828	
Average owners' payments							\$ 712	\$ 632	- 11.2	17.1	\$ 904	\$ 1,059	
Avg. value, owned dwell.							\$ 90,399	\$ 141,878	56.9	81.5	\$ 230,645	\$ 418,703	

Source: Statistics Canada. Notes: incomes are for 2005 and 2000; rent/owner's payments are restricted to non-farm, non-reserve private dwellings.

Valemount Village

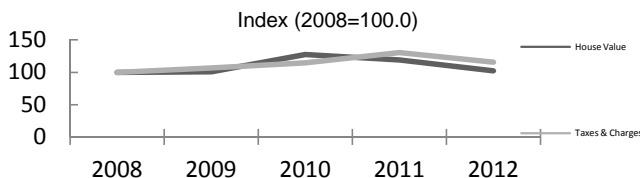
4		Labour Force by Industry (NAICS)					
		Valemount			BC	% Distribution, 2006	
Industry		2001	2006	% Change	% change	Valemount	BC
Total labour force		685	640	- 6.6	8.1	100.0	100.0
Industry - Not applicable		30	10	- 66.7	- 26.6	1.6	1.5
All industries (Experienced LF)		655	630	- 3.8	8.9	98.4	98.5
111-112 Farms		-	-	-	5.2	-	1.8
113 Forestry and logging		45	55	22.2	- 10.0	8.6	1.0
114 Fishing, hunting and trapping		-	-	-	1.3	-	0.2
1151/2 Support activities for farms		-	-	-	11.3	-	0.1
1153 Support activities for forestry		10	-	- 100.0	- 21.5	-	0.3
21 Mining and oil and gas extraction		-	10	-	42.6	1.6	0.9
22 Utilities		10	-	- 100.0	- 3.4	-	0.5
23 Construction		20	20	-	39.9	3.1	7.5
31-33 Manufacturing		75	55	- 26.7	- 2.7	8.6	8.5
311 Food manufacturing		-	-	-	3.6	-	1.0
321 Wood product manufacturing		65	45	- 30.8	- 16.1	7.0	1.7
322 Paper manufacturing		-	-	-	- 13.5	-	0.6
41 Wholesale trade		15	25	66.7	11.6	3.9	4.1
44-45 Retail trade		85	65	- 23.5	6.9	10.2	11.2
441 Motor vehicle and parts dealers		10	15	50.0	9.0	2.3	1.1
445 Food and beverage stores		30	-	- 100.0	8.4	-	2.9
448 Clothing & clothing accessories		-	-	-	9.2	-	1.1
452 General merchandise stores		-	-	-	6.5	-	1.2
48-49 Transportation & warehousing		95	55	- 42.1	0.6	8.6	5.2
51 Information and cultural industries		-	10	-	- 5.3	1.6	2.6
52 Finance and insurance		-	-	-	4.5	-	3.8
53 Real estate & rental/leasing		-	10	-	22.1	1.6	2.3
54 Prof'sonal, scientific & tech. serv.		15	-	- 100.0	18.6	-	7.3
55 Mgmt. of companies/ent'prises		-	-	-	126.6	-	0.1
56 Admin+support, waste mgmnt srv.		20	10	- 50.0	20.4	1.6	4.4
61 Educational services		35	55	57.1	9.2	8.6	6.9
62 Health care and social assistance		15	25	66.7	6.5	3.9	9.6
71 Arts, entertainment and recreation		20	-	- 100.0	11.3	-	2.3
72 Accommodation and food services		140	155	10.7	7.7	24.2	8.1
721 Accommodation services		35	105	200.0	2.5	16.4	1.7
722 Food services & drinking places		110	50	- 54.5	9.2	7.8	6.4
81 Other services (excl. public admin.)		15	55	266.7	11.8	8.6	4.9
91 Public administration		40	30	- 25.0	- 2.0	4.7	5.0
Special Aggregations	Agriculture, Food and Beverage	10	-	- 100.0	5.8	-	2.9
	Fishing and Fish Processing	-	-	-	- 3.3	-	0.5
	Logging and Forest Products	120	100	- 16.7	- 14.7	15.6	3.7
	Mining and Mineral Products	10	10	-	17.1	1.6	2.1

Source: Statistics Canada. Industry according to NAICS version used in each census. Unpublished data.

5		Business Locations- Number of Firms by Employment Size Range								
		Firms with no employees		Firms with employees		% change	Fraser-FtGeo RD			
		Fraser-FtGeo RD	BC	Fraser-FtGeo I	BC	Fraser-FtGeo RD	1 to 19	20 to 49	50-199	200 Plus
2008		2,974	185,879	3,746	175,003	-	3,241	348	128	29
2009		3,074	186,541	3,866	176,124	3.2	3,350	365	121	30
2010		2,886	194,349	3,663	175,913	- 5.3	3,170	344	118	31
2011		2,889	195,290	3,611	173,589	- 1.4	3,140	326	117	28

Source: Business Register, Statistics Canada. In some areas, boundary changes/geocoding changes may cause large changes.

6		Municipal Residential Taxes and Charges on a Representative House					
		Valemount					
		House Value		Taxes & Charges			
Year	\$	% change	\$	% change			
2008	123,329		1,934				
2009	124,452	0.9	2,063	6.6			
2010	156,894	26.1	2,218	7.5			
2011	146,711	-6.5	2,518	13.5			
2012	126,060	-14.1	2,232	-11.4			



Source: Ministry of Community, Sport & Cultural Development http://www.cd.gov.bc.ca/lgd/infra/statistics_index.htm (No RD level figures)

Valemount Village

7	Values of Building Permits								
	Residential				Non-Residential		Total		Year
	Number of Units		Value \$'000		Value \$'000		Value \$'000		
Valemount	BC	Valemount	BC	Valemount	BC	Valemount	BC		
2007	346	40,932	85,441	8,611,723	93,522	3,932,968	178,963	12,544,691	2007
2008	305	30,110	67,768	6,899,289	80,017	3,677,866	147,785	10,577,155	2008
2009	173	18,607	49,196	4,491,075	41,751	3,138,810	90,947	7,629,885	2009
2010	275	28,984	63,742	6,705,888	85,180	3,017,921	148,922	9,723,809	2010
2011	208	25,745	55,589	6,113,406	60,652	3,136,361	116,241	9,249,767	2011

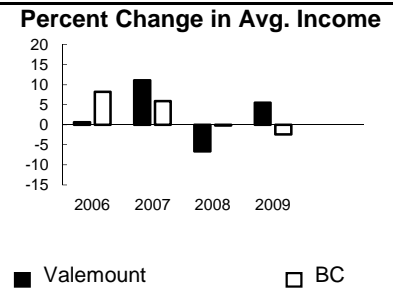
Source: Statistics Canada

Data is for Fraser-Fort George Regional District

Note: Detailed non-residential permits data can be found on our Website: www.bcstats.gov.bc.ca

A dash can indicate a nil report, a value of less than \$500, or non-reporting. P indicates 'preliminary'.

8	Personal Taxation Statistics						Percent Change in Avg. Income	
	Total Income of All Returns							
	All Returns (number)		Average Income (\$)		% Change avg. income			
Year	Valemount	BC	Valemount	BC	Valemount	BC		
2005	1,340	3,154,090	29,592	35,601	n/a	n/a		
2006	1,290	3,165,750	29,767	38,523	0.6	8.2		
2007	1,300	3,287,750	33,055	40,802	11.0	5.9		
2008	1,340	3,383,640	30,852	40,736	-6.7	-0.2		
2009	1,320	3,406,860	32,549	39,754	5.5	-2.4		



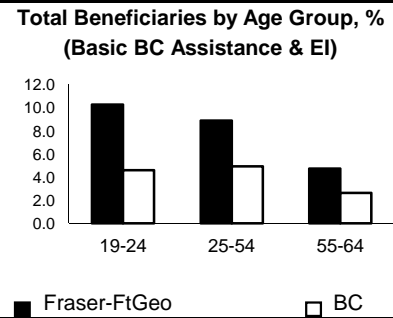
Taxation data available at: <http://www.bcstats.gov.bc.ca/data/dd/income.asp>

9	Source of Total Income 2009				% Distribution, Total Income					
	Valemount		BC							
	\$Thousands	% of Total	% of Total							
Employment	26,302	61.2	63.7	Employment	61.2	63.7	Self-Emply'd	3.3	5.3	2.0
Pension	7,023	16.3	13.8	Pension	16.3	13.8	Other	8.7	5.3	2.0
Investment	3,349	7.8	9.8	Investment	7.8	9.8	Tax Exempt	2.7	2.0	100.0
Self-Employed	1,420	3.3	5.3	Self-Emply'd	3.3	5.3	Total	42,965	100.0	100.0
Other	3,719	8.7	5.3	Other	8.7	5.3				
Tax Exempt	1,153	2.7	2.0	Tax Exempt	2.7	2.0				



Source: Canada Revenue Agency. Areas are defined by postal codes and may not match municipal boundaries.

9	Dependency on the Safety Net						Total Beneficiaries by Age Group, % (Basic BC Assistance & EI)		
	Percentage of Population by Age Receiving Benefits - September 2009								
	Age Group	BC Basic* Income Assistance Recipients (%)		Employment Insurance Beneficiaries (%)		Total of BC Basic Income Assistance & EI Beneficiaries (%)			
Fraser-FtGeo		BC	Fraser-FtGeo	BC	Fraser-FtGeo	BC			
Under 19	5.5	2.7							
19-24	4.6	2.1	5.8	2.6	10.3	4.6			
25-54	3.6	1.9	5.4	3.1	8.9	4.9			
55-64	1.2	0.7	3.6	2.0	4.7	2.6			
19-64	3.3	1.7	5.1	2.8	8.3	4.4			



* On temporary assistance only. Excluded are those on Continuous Assistance, aboriginals living on reserve, seniors/OAS, & children living with relatives.

Source: BC Stats (using administrative files from the BC Ministry of Housing & Social Development, and Human Resources & Social Development Canada)

Note: EI Beneficiaries reports now include regular, fishing and employment benefits, work sharing and support measures. The reports exclude sickness, maternity and parental benefits.

10	Business Formations and Failures								
	Incorporations			Bankruptcies					
	Number		Year	Prince George		Cariboo DR		BC	
Valemount	BC	Business		Consumer	Business	Consumer	Business	Consumer	
2007	5	34,036	2005	34	330	n.a.	n.a.	786	8,168
2008	7	30,085	2006	18	188	42	344	585	7,020
2009	2	26,431	2007	18	168	41	308	470	6,651
2010	2	30,305	2008	24	226	46	394	454	7,293
2011	1	30,844	2009	19	315	35	576	380	10,639

Source: BC Ministry of Finance

Source: Office of the Superintendent of Bankruptcy, Government of Canada

Incorporations are counted in municipality of the registered office address which may differ from the actual business location.

Note: Bankruptcy is by urban postal code forward sortation area and is counted where it is filed.